



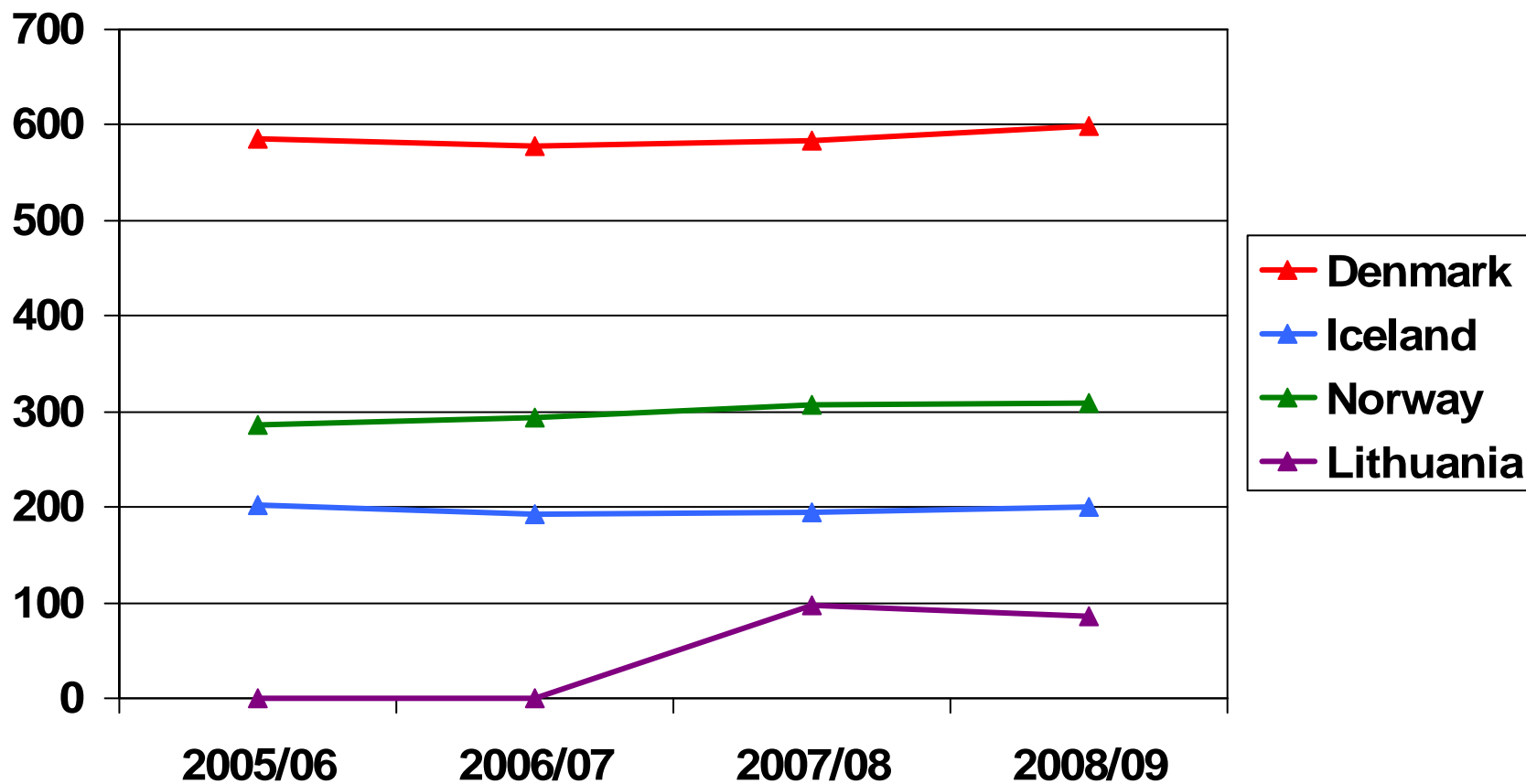
District Conference

Roskilde

24. – 27. September 2009

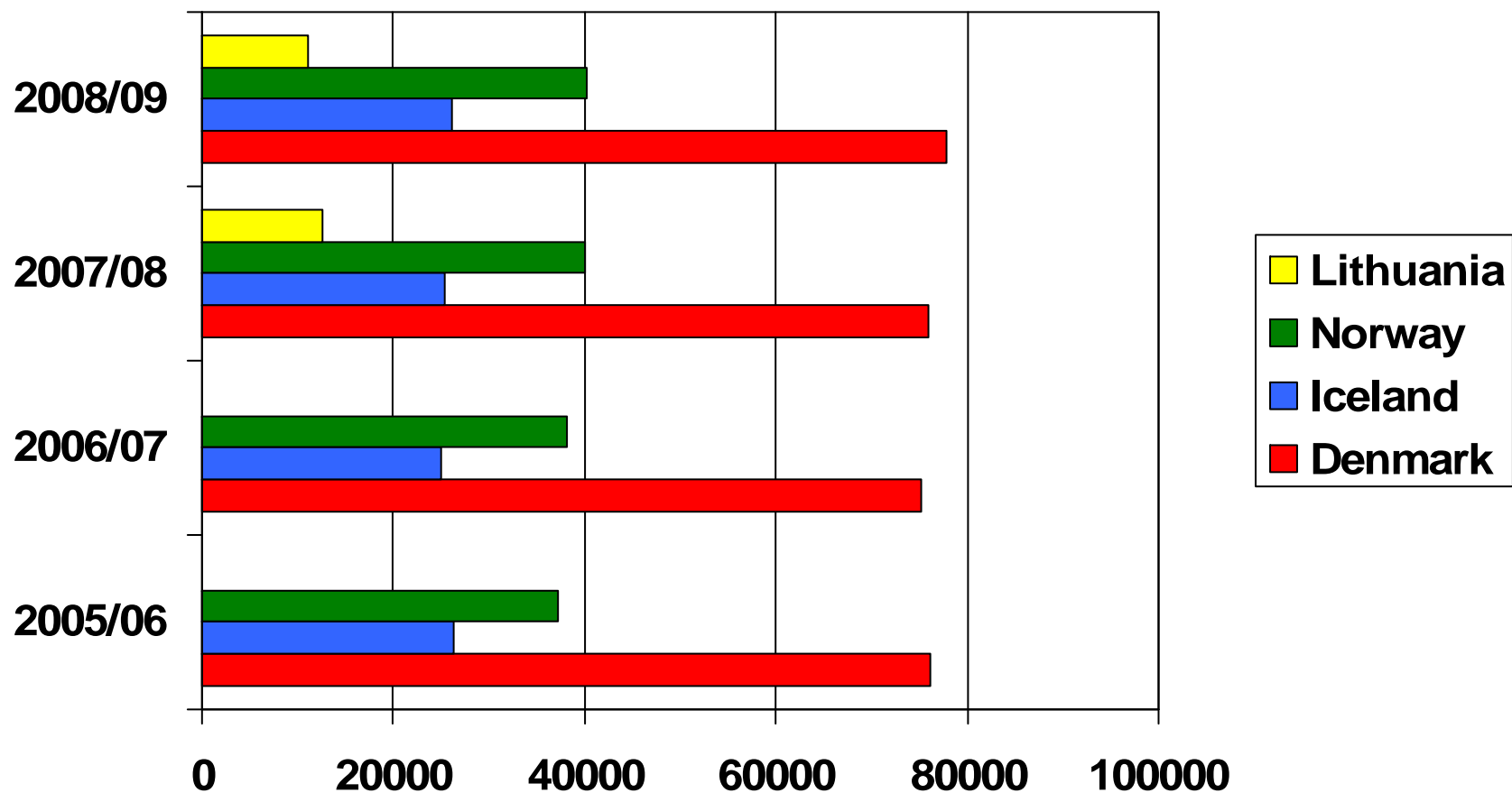


Number of paying members District 13



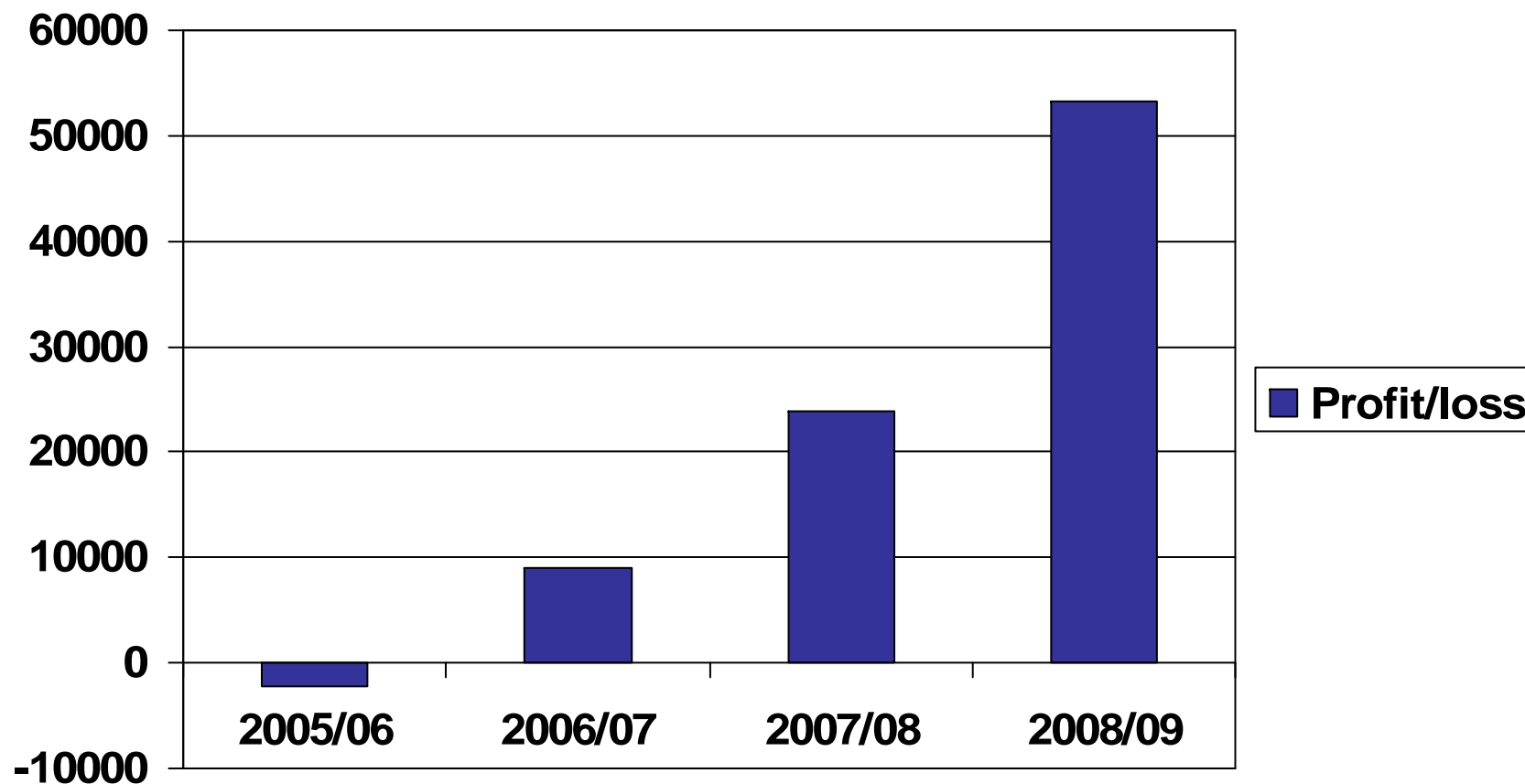


Income Membership fees, in NOK





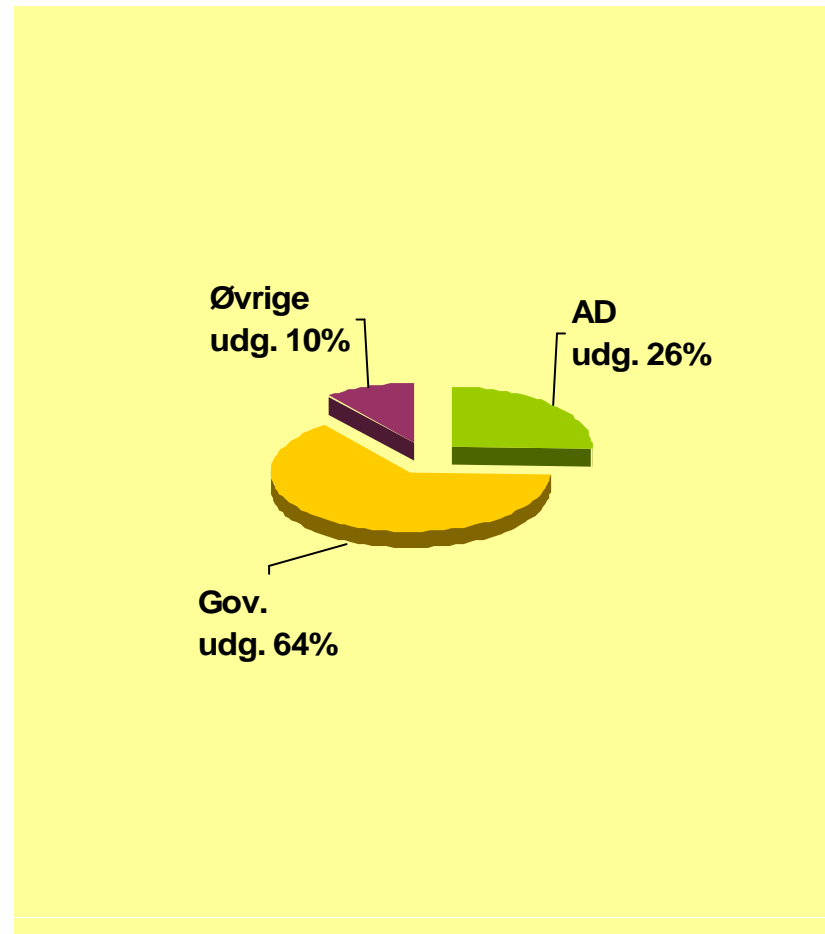
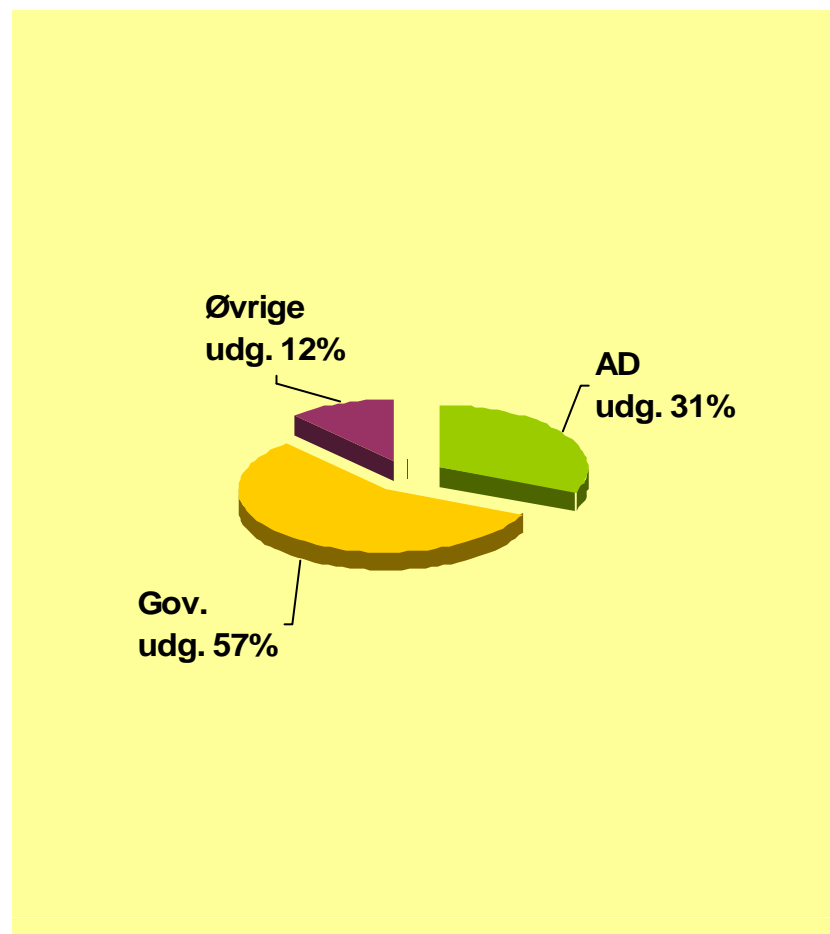
Profit/loss over the last 4 years



Roskilde 24. - 27. September
2009



Allocation of expenses 2007/08 and 2008/09





Financial Statements for the last 2 years District 13

<i>2007/08</i>	NOK	<i>2008/09</i>	NOK
Membership fees	153.917	Membership fees	155.350
AD costs	-44.569	AD costs	-29.486
Gov.etc Costs	-81.711	Gov.etc Costs	-72.503
Other costs	-16.496	Other costs	-12.026
Interest income	12.716	Interest income	11.983
Profit	23.858	Profit	53.318



Balance sheet at 31. May 2009

<i>Assets</i>	NOK
Bank deposits etc.	361.803
<i>Liabilities</i>	
Capital and reserves	343.611
Fund to build up network in Lithuania	2.143
Debts	16.049
<i>Total liabilities</i>	361.803



Budget District 13

	2010/11	2011/12
Fee for each member	NOK 130	NOK 130
Membership fees	160.160	161.850
AD costs	-36.000	-48.000
Gov. Etc. Costs	-95.500	-79.500
Other costs	-26.000	-37.000
Interest income	3.000	3.000
Profit/loss	5,660	350



Budget District 13

	2008/09 A	2008/09 B
Fee for each member	NOK 130	NOK 130
Membership fees	164.840	164.840
AD costs	-35.983	-40.000
Gov. Etc. Costs	-83.000	-80.000
Other costs	-43.000	-45.500
Interest income	5.500	2.600
Profit/loss	8.357	1.940